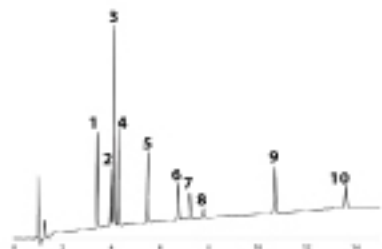


Sapphirus C18 HL / 3u 100 X 2.1mm (P/N : SAP-3C18HL-10021 )

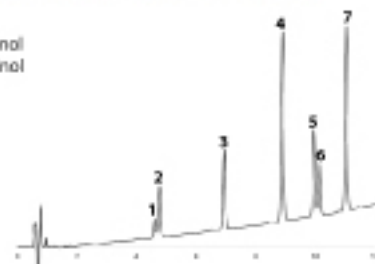
1. Estriol
2. Prednisolone
3. Prednisone
4. Cortisone
5. Corticosterone
6. 17 $\beta$ -Estradiol
7. 17 $\alpha$ -Estradiol
8. Impurity
9. Progesterone
10. Hydroxyprogesterone



- Mobile Phase A: 0.1% Formic Acid in Water
- Mobile Phase B: 0.1% Formic Acid in Acetonitrile
- Gradient: 25% B to 85% B in 12min / Hold at 85%B for 4min
- Flow Rate: 1.5mL/min
- Temperature: 25C
- Detection: 235nm

Sapphirus C18 / 5u 150 X 4.6mm (P/N : SAP-5C18-15046 )

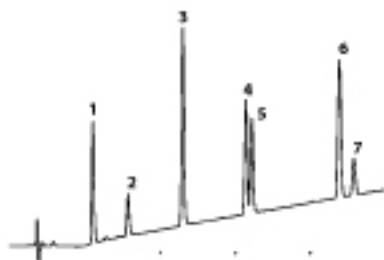
1. 11-Carboxytetrahydrocannabinol
2. 11-Hydroxytetrahydrocannabinol
3. Cannabidiol
4. Cannabichromene
5. D9-Tetrahydrocannabinol
6. D8-Tetrahydrocannabinol
7. Cannabinol



- Mobile Phase A: 0.1% Formic Acid in Water
- Mobile Phase B: 0.1% Formic Acid in Acetonitrile
- Gradient: 60% B to 90% B in 10min / Hold at 90%B for 2min
- Flow Rate: 0.3mL/min
- Temperature: 25C
- Detection: 230nm

Sapphirus C18 HL / 3u 100 X 2.1mm (P/N : SAP-3C18HL-10021 )

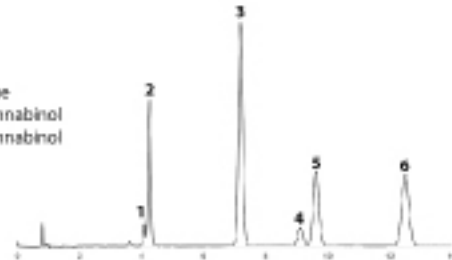
1. Aspirin
2. Impurity
3. Proxicam
4. Ketoprofen
5. Naproxen
6. Indomethacin
7. Ibuprofen



- Mobile Phase A: 0.1% Formic Acid in Water
- Mobile Phase B: 0.1% Formic Acid in Acetonitrile
- Gradient: 30% B to 70% B in 10min
- Flow Rate: 0.3mL/min
- Temperature: 25C
- Detection: 230nm

Sapphirus C18 HL / 3u 100 X 2.1mm (P/N : SAP-3C18HL-10021 )

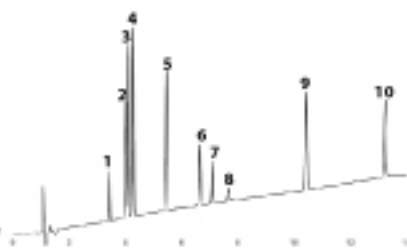
1. Impurity
2. Cannabidiol
3. Cannabichromene
4. D9-Tetrahydrocannabinol
5. D8-Tetrahydrocannabinol
6. Cannabinol



- Mobile Phase Water/Acetonitrile/Methanol (20/65/15)
- Flow Rate: 1.5mL/min
- Temperature: 25C
- Detection: 235nm

Sapphirus C18 / 3u 100 X 2.1mm (P/N : SAP-3C18-10021 )

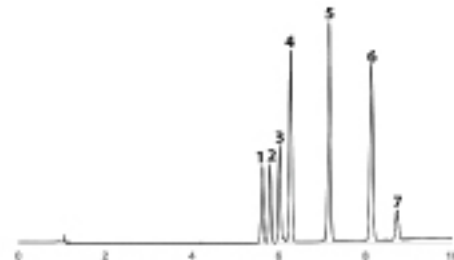
1. Estriol
2. Prednisolone
3. Prednisone
4. Cortisone
5. Corticosterone
6. 17 $\beta$ -Estradiol
7. 17 $\alpha$ -Estradiol
8. Impurity
9. Progesterone
10. Hydroxyprogesterone



- Mobile Phase A: 0.1% Formic Acid in Water
- Mobile Phase B: 0.1% Formic Acid in Acetonitrile
- Gradient: 25% B to 85% B in 12min / Hold at 85%B for 4min
- Flow Rate: 1.5mL/min
- Temperature: 25C
- Detection: 235nm

Sapphirus C18 HL / 3u 100 X 4.6mm (P/N : SAP-3C18HL-10046 )

1. Lorazepam
2. Oxazepam
3. Alprazolam
4. Temazepam
5. Clonazepam
6. Diazepam



- Mobile Phase A: 0.1% Formic Acid in Water
- Mobile Phase B: 0.1% Formic Acid in Acetonitrile
- Gradient: 30% B to 60% B in 10min
- Flow Rate: 1.5mL/min
- Temperature: 25C
- Detection: 254nm